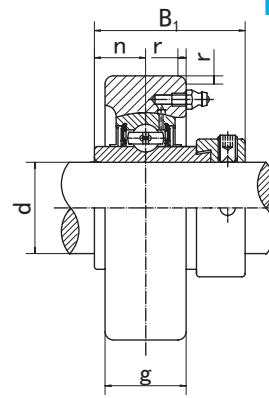
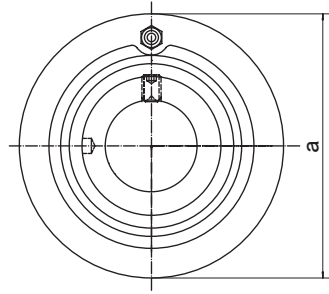


## Cartridge Units

### HCC2 (Normal-duty)



Unit NO.	Dimensions ( mm / in. )						Bearing No.	Housing No.	Weight (kg)
	d	a	g	r	B <sub>1</sub>	n			
<b>HCC204</b>	<b>20</b>	<b>72</b>	<b>20</b>	<b>2</b>	<b>43.7</b>	<b>17.1</b>	<b>HC204</b>	C204	0.54
204-12	3/4	2.8346	25/32	0.079	1.720	0.673	HC204-12		0.54
<b>HCC205</b>	<b>25</b>	<b>80</b>	<b>22</b>	<b>2</b>	<b>44.4</b>	<b>17.5</b>	<b>HC205</b>	C205	0.69
205-13	13/16	3.1496	55/64	0.079	1.748	0.689	HC205-13		0.74
205-14	7/8						HC205-14		0.73
205-15	15/16						HC205-15		0.71
205-16	1						HC205-16		0.69
<b>HCC206</b>	<b>30</b>						<b>85</b>	<b>27</b>	<b>2</b>
206-17	1-1/16	3.3465	1-1/16	0.079	1.906	0.720	HC206-17	0.91	
206-18	1-1/8						HC206-18	0.88	
206-19	1-3/16						HC206-19	0.86	
206-20	1-1/4						HC206-20	0.83	
<b>HCC207</b>	<b>35</b>						<b>90</b>	<b>28</b>	<b>2</b>
207-20	1-1/4	3.5433	1-7/64	0.079	2.012	0.740	HC207-20	1.09	
207-21	1-5/16						HC207-21	1.05	
207-22	1/3/8						HC207-22	1.02	
207-23	1-7/16						HC207-23	1.00	
<b>HCC208</b>	<b>40</b>						<b>100</b>	<b>30</b>	<b>2.5</b>
208-24	1-1/2	3.9370	1-3/16	0.098	2.217	0.843	HC208-24	1.35	
208-25	1-9/16						HC208-25	1.31	
<b>HCC209</b>	<b>45</b>						<b>110</b>	<b>31</b>	<b>2.5</b>
209-26	1-5/8	4.3307	1-7/32	0.098	2.217	0.843	HC209-26	1.70	
209-27	1-11/16						HC209-27	1.65	
209-28	1-3/4						HC209-28	1.61	
<b>HCC210</b>	<b>50</b>						<b>120</b>	<b>33</b>	<b>2.5</b>
210-29	1-13/16	4.7244	1-19/64	0.098	2.469	0.969	HC210-29	2.09	
210-30	1-7/8						HC210-30	2.13	
210-31	1-15/16						HC210-31	2.07	
210-32	2						HC210-32	2.01	
<b>HCC211</b>	<b>55</b>						<b>125</b>	<b>35</b>	<b>2.5</b>
211-32	2	4.9213	1-3/8	0.098	2.811	1.094	HC211-32	2.61	
211-33	2-1/16						HC211-33	2.43	
211-34	2-1/8						HC211-34	2.36	
211-35	2-3/16						HC211-35	2.28	
<b>HCC212</b>	<b>60</b>						<b>130</b>	<b>38</b>	<b>2.5</b>
212-36	2-1/4	5.1181	1-1/2	0.098	3.063	1.220	HC212-36	2.70	
212-37	2-5/16						HC212-37	2.75	
212-38	2-3/8						HC212-38	2.68	
212-39	2-7/16						HC212-39	2.67	
<b>HCC213</b>	<b>65</b>						<b>140</b>	<b>40</b>	<b>3</b>
213-40	2-1/2	5.5118	1-37/64	0.118	3.374	1.343	HC213-40	3.44	
213-41	2-9/16						HC213-41	3.32	